

VERSALIFT

VTM145-F

Chassis mounted
telescopic platform



PTO driven hydraulic pump



FPC controls with up to 4 actions at a time



Turret tailswing within the mirrors



Outriggers within the mirrors



1 kV certified low voltage insulation



VERSALIFT

A **TIME** MANUFACTURING COMPANY

VTM145-F - MAN TGL / Mercedes Atego



The most precise control system on the market

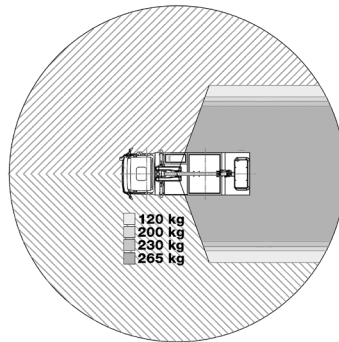
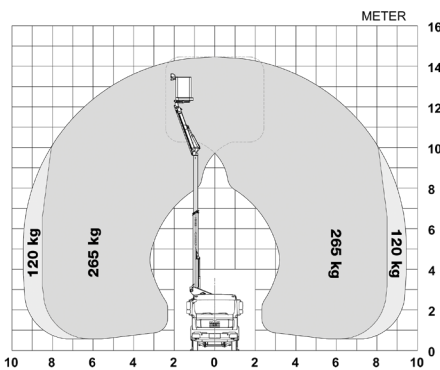
Velvet smooth platform operation and working conditions

Ultra-high strength steel boom delivers exceptional rigidity

■ Length: 7,085 mm ■ Height: 3,200 mm ■ Wheelbase: 3,300 mm



Diagramme(s)



Options

- Inverter
- Cabinets for the chassis
- Workshop interior
- Bucket rotator (2 x 85°)
- Extended bucket (replaces standard bucket)
- Drive option (drive the vehicle with raised platform)
- Load cell (Variable load dependant outreach)
- Home function & limited working area without outriggers



The shaped profile ultra high strength steel booms provide improved rigidity, stiffness and performance



Ground level emergency lowering from the chassis (pedestal mounted valve bank)



Cabinets for the chassis (optional)



FPC (Full Proportional CANbus controls): Variable outreach (with load cell) and up to 4 actions at a time

Notes

Technical information is subject to change without prior notice. Images may show optional equipment. Installations and/or options may not be available in your specific region.

* Depending on the vehicle.

** Max payload with a driver, a passenger and a full tank of fuel (280 kg added to the installation weight).

*** Reduced outreach and max 230 kg bucket capacity.

Distributor

Versalift International
Soendervang 3, 9640 Farsøe
Denmark

+45 9863 2433
sales@versalift.dk
versaliftinternational.com